

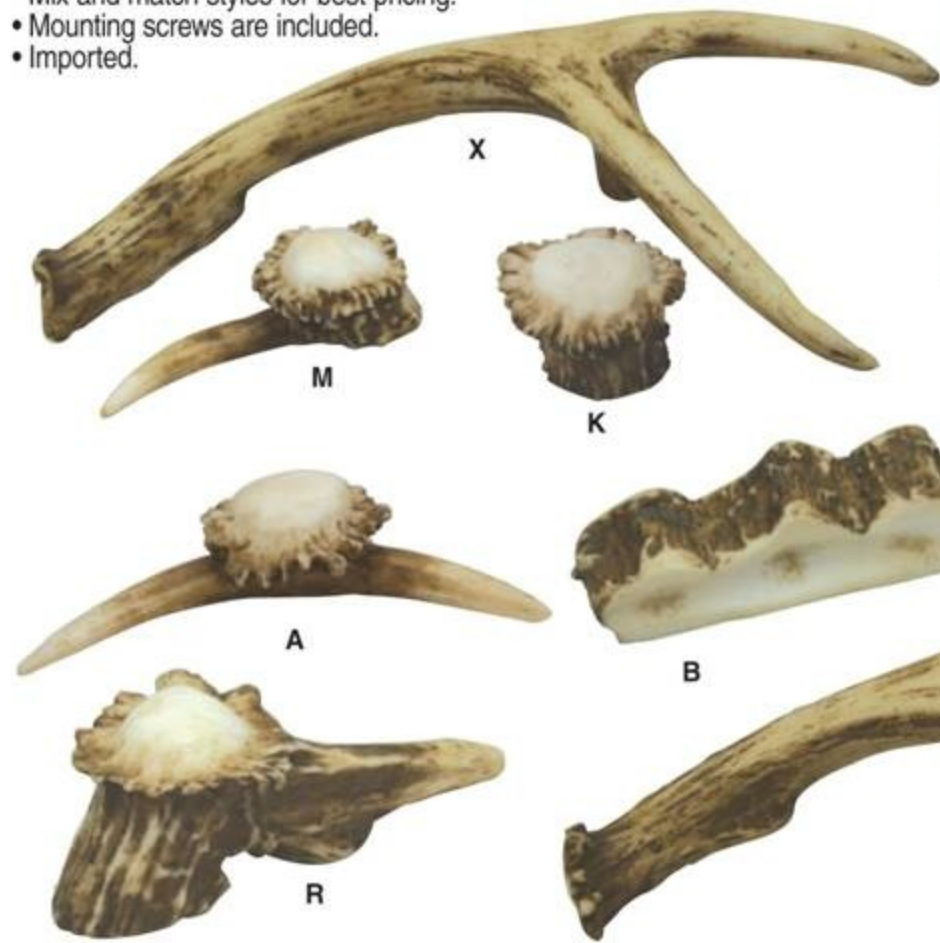
NOW YOU CAN ADD THE AUTHENTIC BEAUTY OF ANTLER PULLS TO YOUR WESTERN DESIGN CASEGOODS AND TRIMWORK WITHOUT SPENDING WEEKS IN THE WOODS

THE BROADEST SELECTION OF ANTLER REPLICAS FOUND ANYWHERE

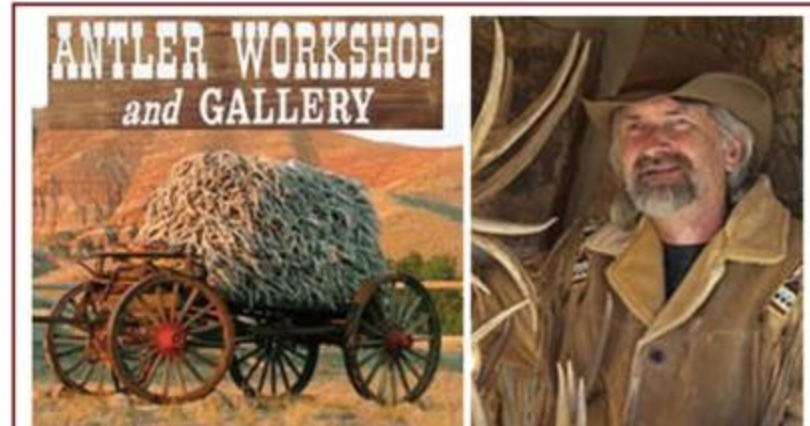
These beautifully crafted antler pulls are so realistic you'll swear they are the real thing. They'll give your project that special eye catching appeal that gets people talking. Until now you would have to spend days on end in the wilderness trying to locate the real thing. Plus, the originals are never consistent in size and shape. Our patterns are the same size each time and that's especially helpful when it comes to reproducing that next set of cabinets that is sure to follow.

The original pieces were crafted from Wyoming mule deer antlers by renowned artist Kurt Gordon, owner of the Antler Workshop and Gallery in Dubois, Wyoming. We had these designs accurately reproduced down to the smallest details and finished with the look and feel of natural shed antlers. We offer 24 styles of knobs, pulls and accents so you can find just the right pieces to give doors and drawers, clocks, plaques, sconces and more a unique and distinctively western look.

- Knobs, pulls and accents are cast urethane resin with a hand-applied finish.
- Pulls have consistently located mounting holes, spaced exactly 3", 3-1/2" or 4-1/2" on center, depending on style.
- All mounting holes are fitted with 8-32 threaded brass inserts.
- If desired, the surface can be lightened by burnishing with fine sandpaper.
- A clear topcoat can be added to increase luster and make the surface more resistant to solvents and wear.
- Mix and match styles for best pricing.
- Mounting screws are included.
- Imported.



For detailed images of all of these pieces, visit: <http://www.woodworker.com/153557>



About the Artist:
Kurt Gordon was born in the Rocky Mountains and raised in a log cabin that his Grandfather built. As a child growing up, the wilderness was his playground and collecting shed antler was his hobby. He learned the importance of living with nature and developed a respect and admiration for the yearly cycle of shedding and re-growing of antler. He saw each antler as a piece of nature - the essence of wildness and wilderness. Kurt now lives and works in a log home in Dubois, Wyoming. There at Antler Workshop and Gallery his lifelong passion for shed antler is reflected in his unique antler designs.

Style	Description	Hole Spacing C/C	Dimensions (L x W)	Projection (Height)	Each	10+	25+*
153-557	A Burr w/2 points knob	NA	4" x 1-5/8"	7/8"	\$7.99	\$7.59	\$7.19
153-551	B 3-piece antler pull	3"	4" x 1-1/4"	1-1/8"	\$7.99	\$7.59	\$7.19
153-554	C Short antler knob	NA	1-5/8" x 1-1/8"	1-1/8"	\$9.19	\$8.69	\$8.19
153-590	D Forked pull, left	4-1/2"	8" x 3-7/8"	1-5/8"	\$11.99	\$11.29	\$10.69
153-584	E Forked pull, left	4-1/2"	8-1/4" x 3-3/4"	1-7/8"	\$11.99	\$11.29	\$10.69
153-593	F Forked pull, left	3-1/2"	5-3/4" x 1-7/8"	1-1/8"	\$9.19	\$8.69	\$8.19
153-596	G Forked pull, left	3-1/2"	6" x 2-7/8"	1-1/8"	\$9.19	\$8.69	\$8.19
153-575	H Forked pull, right	4-1/2"	8" x 3-3/8"	1-1/4"	\$11.99	\$11.29	\$10.69
153-545	I Tapered antler knob	NA	2-7/8" x 7/8"	3/4"	\$7.99	\$7.59	\$7.19
153-548	J Straight antler pull	3"	4" x 1-1/8"	1"	\$7.99	\$7.59	\$7.19
153-530	K Burr knob	NA	1-7/8" x 1-7/8"	1-1/8"	\$8.69	\$8.19	\$7.69
153-539	L Burr w/point knob	NA	4" x 1-3/4"	1"	\$7.99	\$7.59	\$7.19
153-536	M Burr w/point knob	NA	3-3/4" x 1-5/8"	1-1/8"	\$7.99	\$7.59	\$7.19
153-581	N Forked pull, left	4-1/2"	7-1/2" x 4"	1-5/8"	\$11.99	\$11.29	\$10.69
153-572	O Forked pull, right	4-1/2"	8-1/4" x 3-3/4"	1-3/8"	\$11.99	\$11.29	\$10.69
153-578	P Forked pull, left	4-1/2"	7-1/2" x 4-1/8"	1-5/8"	\$11.99	\$11.29	\$10.69
153-587	Q Forked pull, right	4-1/2"	7-1/2" x 3-7/8"	1-3/8"	\$11.99	\$11.29	\$10.69
153-542	R Burr w/eye guard knob	NA	4" x 1-3/4"	1-3/8"	\$7.99	\$7.59	\$7.19
153-533	S Burr w/eye guard knob	NA	2-3/8" x 2-3/4"	1-1/8"	\$7.99	\$7.59	\$7.19
153-527	T 3-burr w/eye guard pull	3-1/2"	5-1/4" x 3"	1-3/4"	\$11.49	\$10.89	\$10.29
153-560	U Forked pull, left	4-1/2"	9-1/4" x 4-1/2"	1-5/8"	\$15.69	\$14.79	\$13.99
153-563	V Forked pull, right	4-1/2"	9-1/4" x 4-1/2"	1-5/8"	\$15.69	\$14.79	\$13.99
153-569	W Forked pull, left	4-1/2"	8" x 3-3/8"	1-5/8"	\$11.99	\$11.29	\$10.69
153-566	X Forked pull, right	4-1/2"	8" x 3-3/8"	1-5/8"	\$11.99	\$11.29	\$10.69

*call for pricing on larger quantities

